

A new product update from...dla

PixelRANGE

PixelRange presents PixelArc C, high powered LED floodlighting.



1) PixelArc C offers twice the output of the big name competitor's wet location floodlight, for more dramatic effects (106 watts vs. 50 watts).

PART NUMBERS (complete unit, with PSU housing)

PCA44BK106B6-H1	(wet/damp/dry rated unit black) 44 LEDs, 106 watts, RGBA
PCA44WH106B-H1	(wet/damp/dry rated unit silver) 44 LEDs, 106 watts, RGBA
PCA44SL106B6-H1	(wet/damp/dry rated unit white) 44 LEDs, 106 watts, RGBA
PCA44BK106C6-H1	(wet/damp/dry rated unit black) 44 LEDs, 106 watts, RGBW
PCA44WH106C6-H1	(wet/damp/dry rated unit silver) 44 LEDs, 106 watts, RGBW
PCA44SL106C6-H1	(wet/damp/dry rated unit white) 44 LEDs, 106 watts, RGBW

UL LISTED E-File# 305745



2) More beam shaping options are offered, for better optical control:

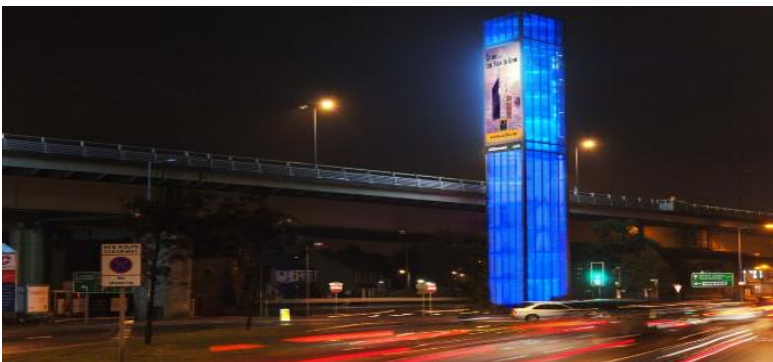
ACCESSORIES

PAR90LSD10	10° Light Shaping Diffusion Kit
PAR90LSD20	20° Light Shaping Diffusion Kit
PAR90LSD30	30° Light Shaping Diffusion Kit
PAR90LSD40	40° Light Shaping Diffusion Kit
PAR90LSD60x1	60x1 linear Light Shaping Diffusion Kit



3) RGBA and RGBW options allow for more subtle color options and better whites than RGB alone.

- 44 high intensity K2 Luxeon emitters
- Red, green, blue, amber or white, high quality, highest color binning
- 6° optics as standard (other beam angles to order)
- 4.2 billion color permutations



4) Unit can operate with DMX or as a stand alone fixture with onboard effects.

Preset Programming

- Onboard digital micro-processor accessible via user interface that provides access to 2 sets of 31 internal effects, each with the ability to vary the speed, intensity and crossfade for each effect
- High frequency strobing up to 28 frames per second (variable up to 10min)



5) Unit is self contained, no need for external enabler (substantial heat sinks extend operational life of LED's).



Click here for full range brochure: <http://www.pixelrange.com/pixelrange/pdf/brochure.pdf>

dla

Diversified Lighting Associates