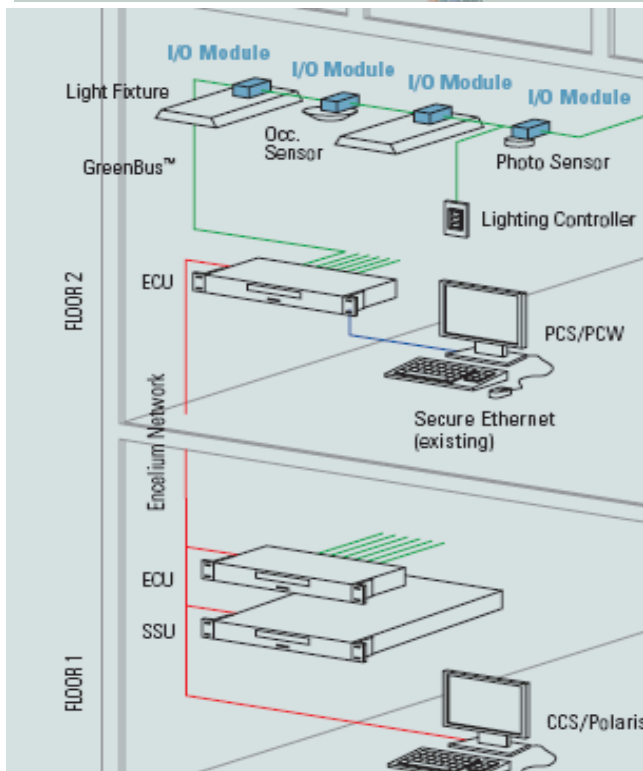


A new product update from...dla

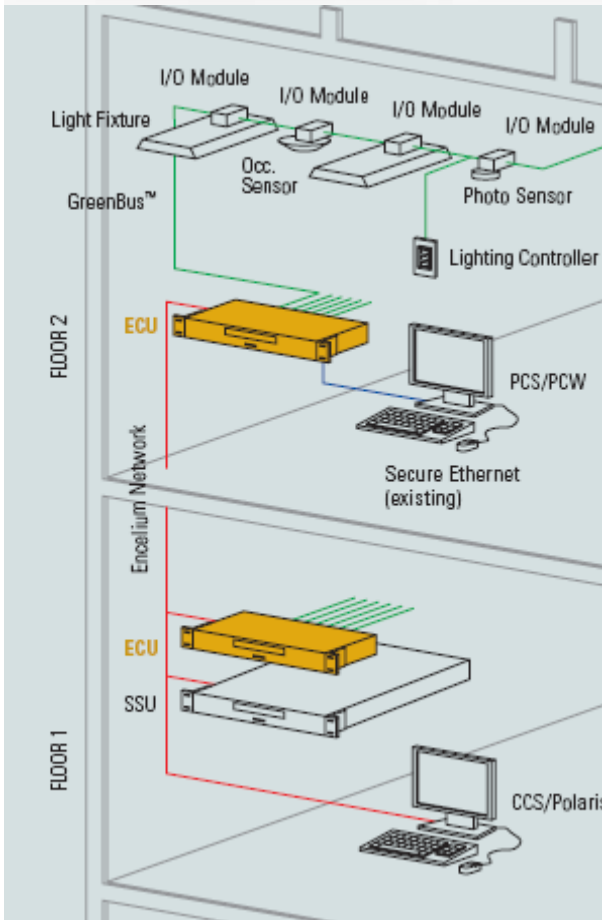


Encelium lighting control and energy management system offers maximum energy savings, minimum specification time, minimum system cost.

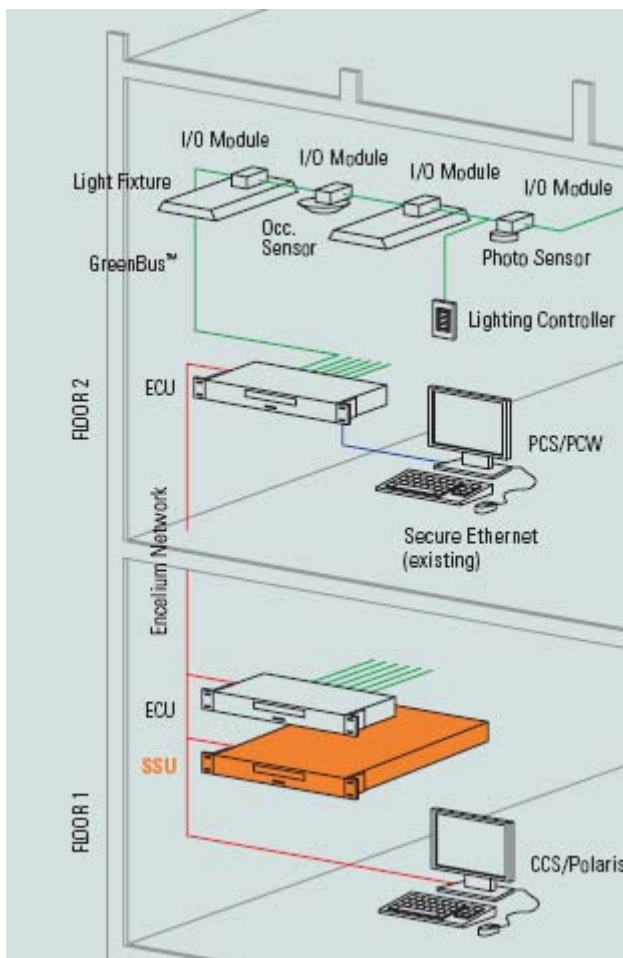
1) Every lighting fixtures, every photo sensor, every occ. sensor gets the addressable I/O module (I/O module dims and switches lighting, receives input from sensors, and shares information with the network).



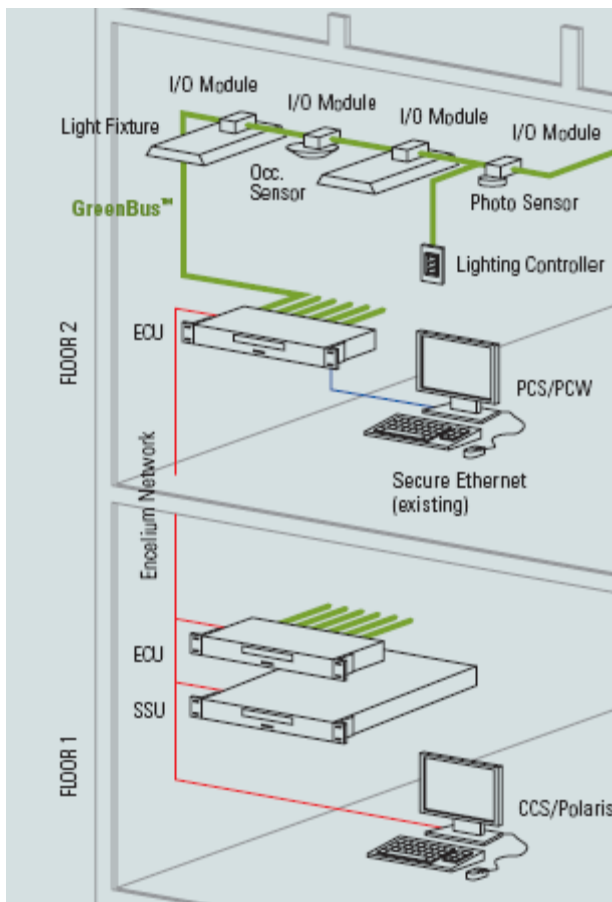
2) Each floor typically gets an Energy Control Unit (ECU collect information from components and determines brightness and on/off status for each fixture or zone).



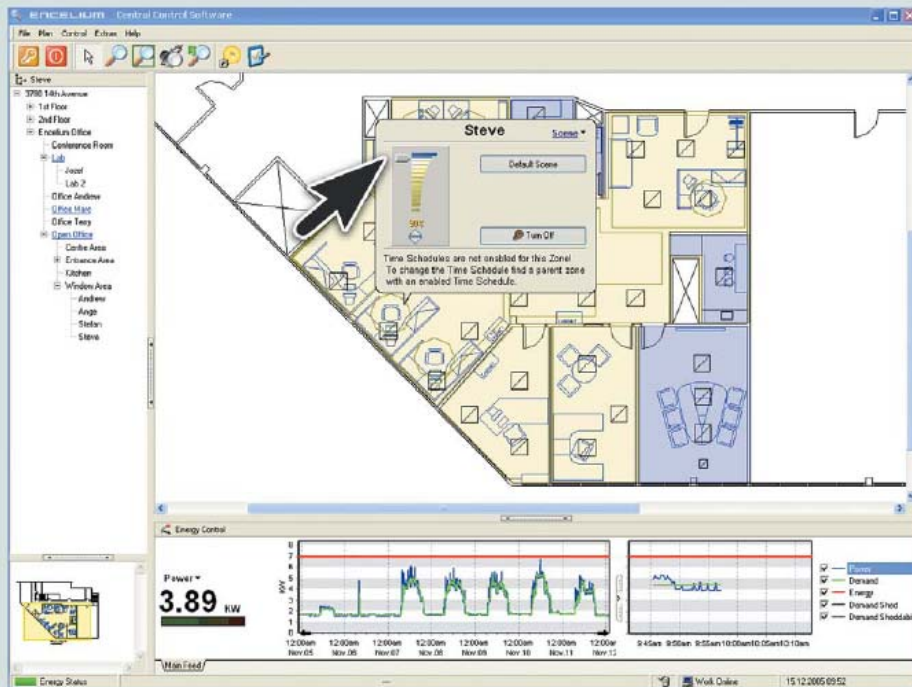
3) One System Support Unit (SSU) is required. This is the database server, storing all setting including set points, lighting levels, time schedules, scenes, etc (SSU also logs operating data, and permits remote access to the system).



4) Components are daisy chained together with "Green Bus" cable (easy daisy chain wiring allows each module to be added in random order. No need for pre-addressing or serial number recording).



5) Lighting control made simple.



LIGHTING CONTROL MADE SIMPLE

SIMPLE TO DESIGN/SPECIFY: ECS utilizes a universal interface module that connects to standard lighting components such as low voltage dimming and non-dimming ballasts, occupancy sensors or photo sensors. Software based zone configuration is independent of lighting circuits or switch legs making design and specification simple and virtually error free.

SIMPLE TO INSTALL: Interface modules can be installed in a daisy chain wiring topology utilizing pre-fabricated Cat. 3 cable with RJ45 connectors. Connection to a fixture or sensor is as easy as "click and go" for the installer with no pre-addressing required.

SIMPLE TO USE: Central control software enables facility managers to control each fixture in a building either from their desktop PC or remotely via the Internet. Easy to use floor-plan based software allows for simple navigation or system configuration.

SIMPLE TO ADAPT: Since each light fixture and sensor in a building is controlled individually, system reconfiguration due to changes in workspace use or tenant construction is done entirely through ECS software. Association of fixtures to zones can be changed by a simple "drag and drop" without ever having to physically re-wire or move hardware again.

Please call for details